

SOLENOID OPERATED BUTTERFLY VALVES

WBV-2S SERIES

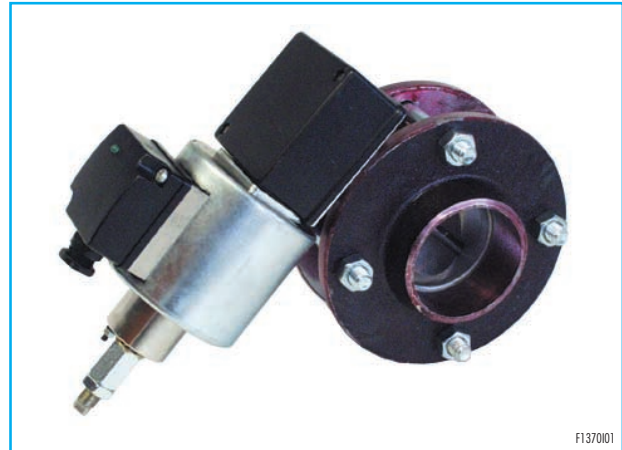
FEATURES

Features of the butterfly valve:

- Valve body: aluminum
- Seat disc: AISI304
- Butterfly valve stem: AISI304
- Available models: DN40 PN10, DN50 PN10, DN65 PN10
- Max. operating pressure: 400 mbar
- Max. fluid temperature: 60 °C
- Leakage: 2-3%

Features of the solenoid:

- Voltage: 115/230V \pm 10% 50/60Hz
- Duty cycle ED: 100% ED
- Live pilot led: green
- Opening time: 1÷3 s
- Closing time: 1÷3 s
- Power consumption: 45 VA
- Cycles: 120/h
- Protections: IP54
- Cable-gland: M16 X 1.5
- Mass: 6 kg
- Housing solenoid: polycarbonate
- Operating position: with horizontal solenoid



F137001



F137002

APPLICATIONS

- Min/max control of cold air to industrial installation. Min. and max flow rates may be adjusted separately.

DESCRIPTION

Model WBV-2S series are butterfly "WAFER" valves, designed to control two-stage air flow in low pressure pipelines. Flow regulation is possible by turning screws on solenoid. De-energized solenoid correspond to first stage of the burner; energized solenoid (opened valve) correspond to second stage. A green pilot led lights when solenoid is live.

INSTALLATION

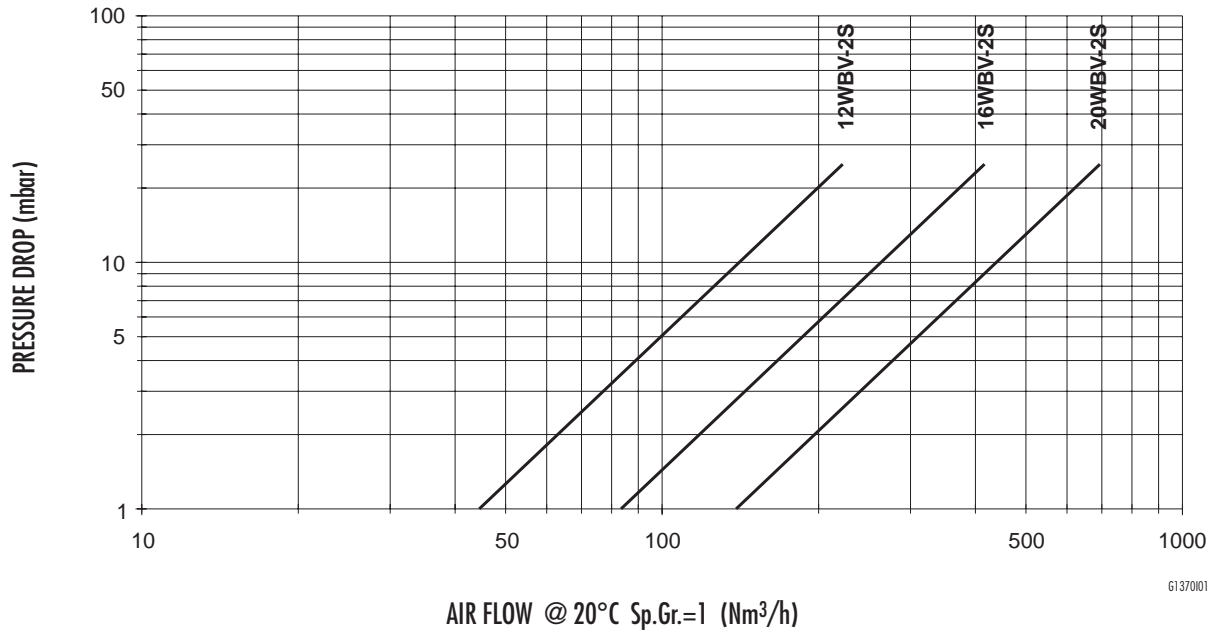
- Butterfly valve may be mounted with the solenoid horizontal.
- It is recommended that the butterfly valve is mounted down stream of any measuring device.
- Flanged design makes installation easier.
- Robust design ensures extended operation in extreme conditions.
- During set-up, place solenoid so that live pilot led is visible by final operator.



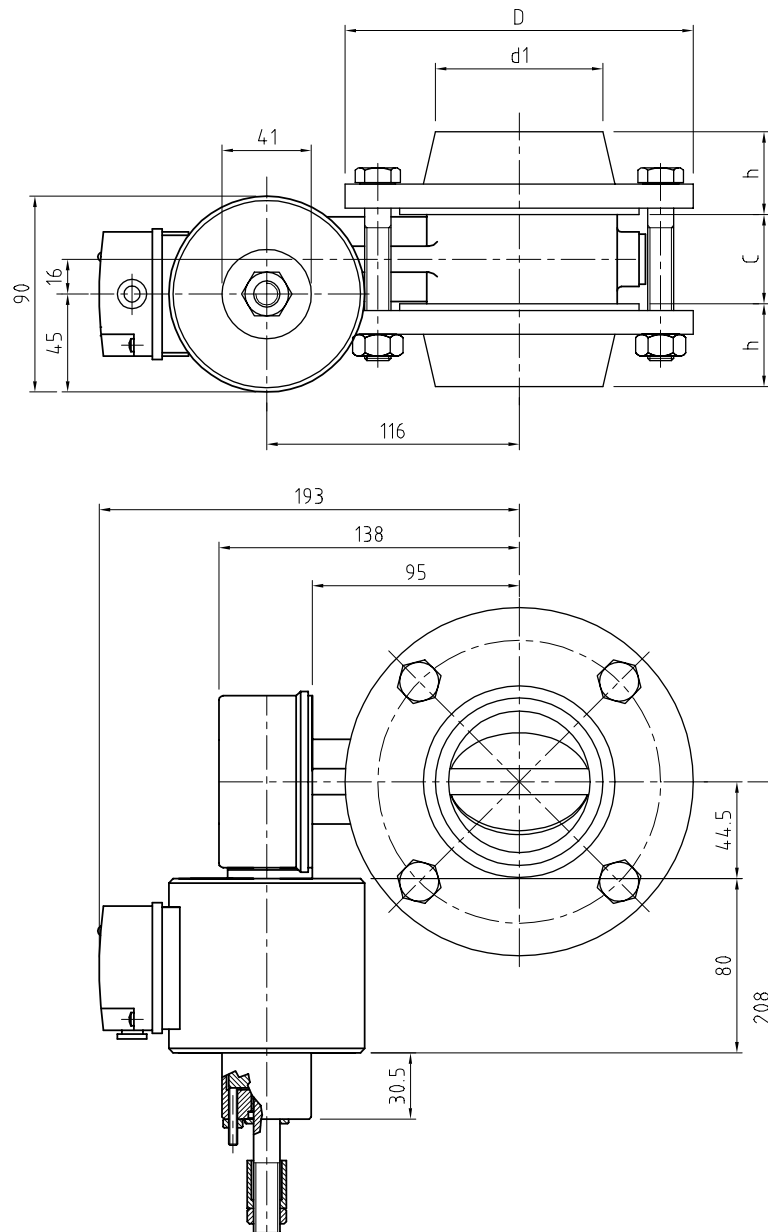
Headquarters
Esa S.r.l.
Via E. Fermi 40 I-24035 Curno (BG) - Italy
Tel. +39.035.6227411 - Fax +39.035.6227499
esa@esacombustion.it - www.esapyronics.com

International Sales
Pyronics International S.A./N.V.
Zoning Ind., 4ème rue B-6040 Jumet - Belgium
Tel +32.71.256970 - Fax +32.71.256979
marketing@pyronics.be

CAPACITY TABLE



DIMENSIONS



D1370001

Catalog No.	ø pipe	DN	PN	D mm	d ₁ mm	C mm	h mm
12 WBV-2S	1.1/2"	40	10	150	49	45	42
16 WBV-2S	2"	50	10	165	61	41	45
20 WBV-2S	2.1/2"	65	10	185	77	41	45